



HELENA COLLEGE
University of Montana

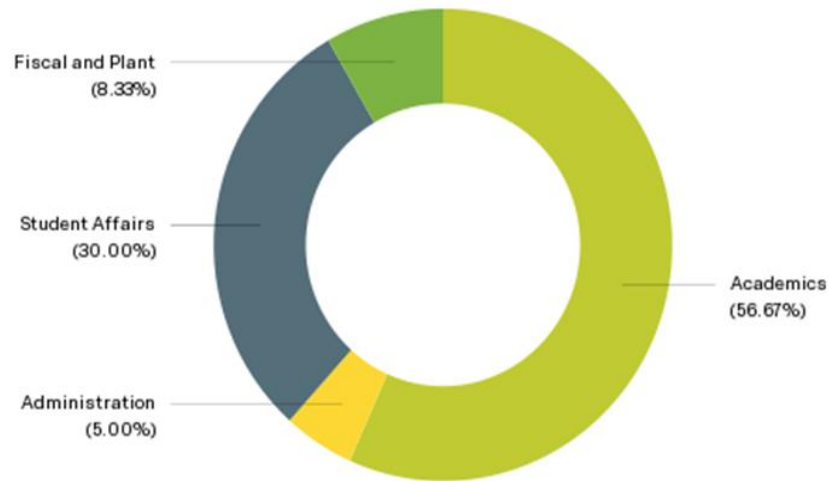
All Campus Year Seven Accreditation Questionnaire

- Purpose to evaluate campus familiarity with issues central to year seven self-study and evaluation (NWCCU Standards 3-5)
- Seven questions focusing on institutional planning, assessment, and mission fulfillment
- Survey distributed to all employees via email and was open March 21st to April 1st. A reminder notice was sent out to those who had not completed the survey on March 28th
- Overall response rate was 60%

Question One: What is your area, department or program?

- Question type: Text entry. Responses were standardized and categorized using “Topics” tags
- Responses: 60 (30 areas/programs/departments represented)

Q1: Survey Respondents by College Division



Campus Employment by Division AY15106

- Academics 56%
- Administration 5%
- Fiscal & Plant 17%
- Student Affairs 21%

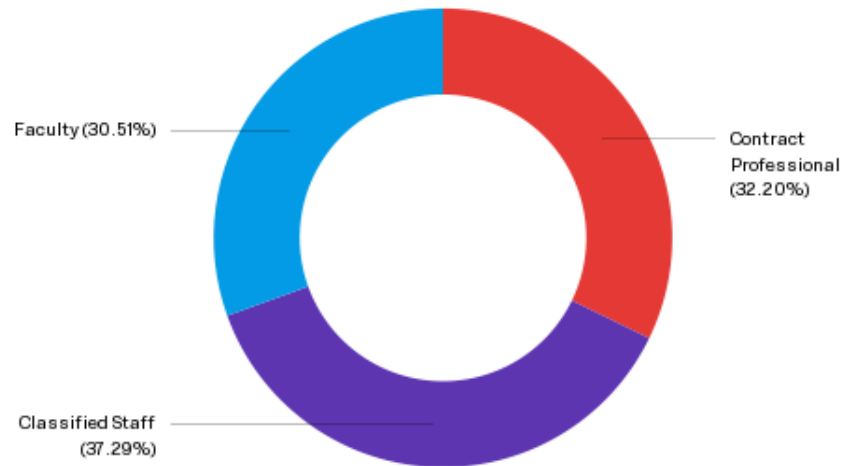
Response Rate by Division

- Academics 62%
- Administration 60%
- Fiscal & Plant 29%
- Student Affairs 100%

Question Two: Please indicate your employee category at Helena College

- Question type: Multiple Choice
- Responses: 59

Q2: Survey Respondents by Employment Category



Campus Employment by Category AY15106

- Classified Staff 42%
- Contract Professional 21%
- Faculty (F/T) 37%

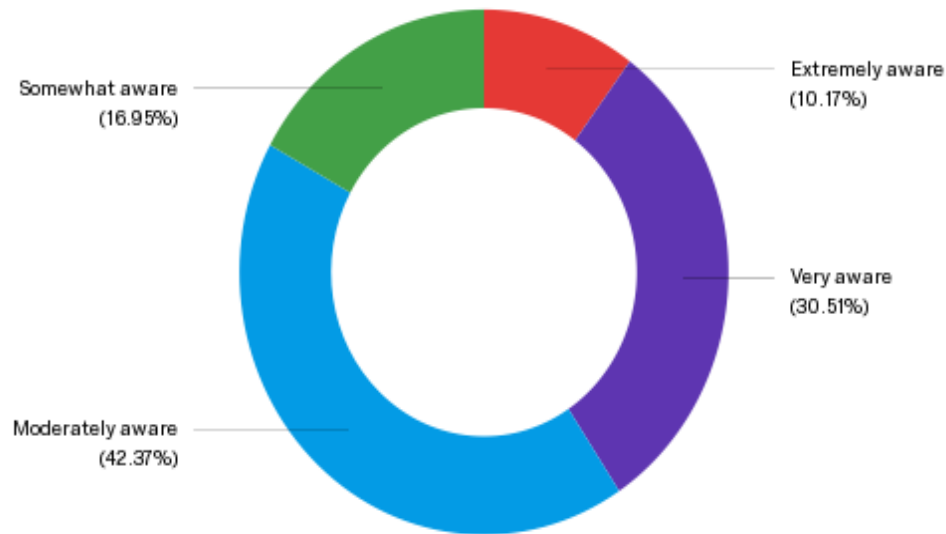
Response Rate by Category

- Classified Staff 54%
- Contract Professional 90%
- Faculty (F/T) 50%

Question Three: How aware are you of the college's progress in fulfilling its mission and achieving its strategic goals?

- Question type: Matrix Table (Likert Scale 1-5)
- Responses: 59

Q3: Awareness of college's progress in fulfilling mission and achieving strategic goals



Question Three: How aware are you of the college's progress in fulfilling its mission and achieving its strategic goals?

- Question type: Matrix Table (Likert Scale 1-5)
- Responses: 59

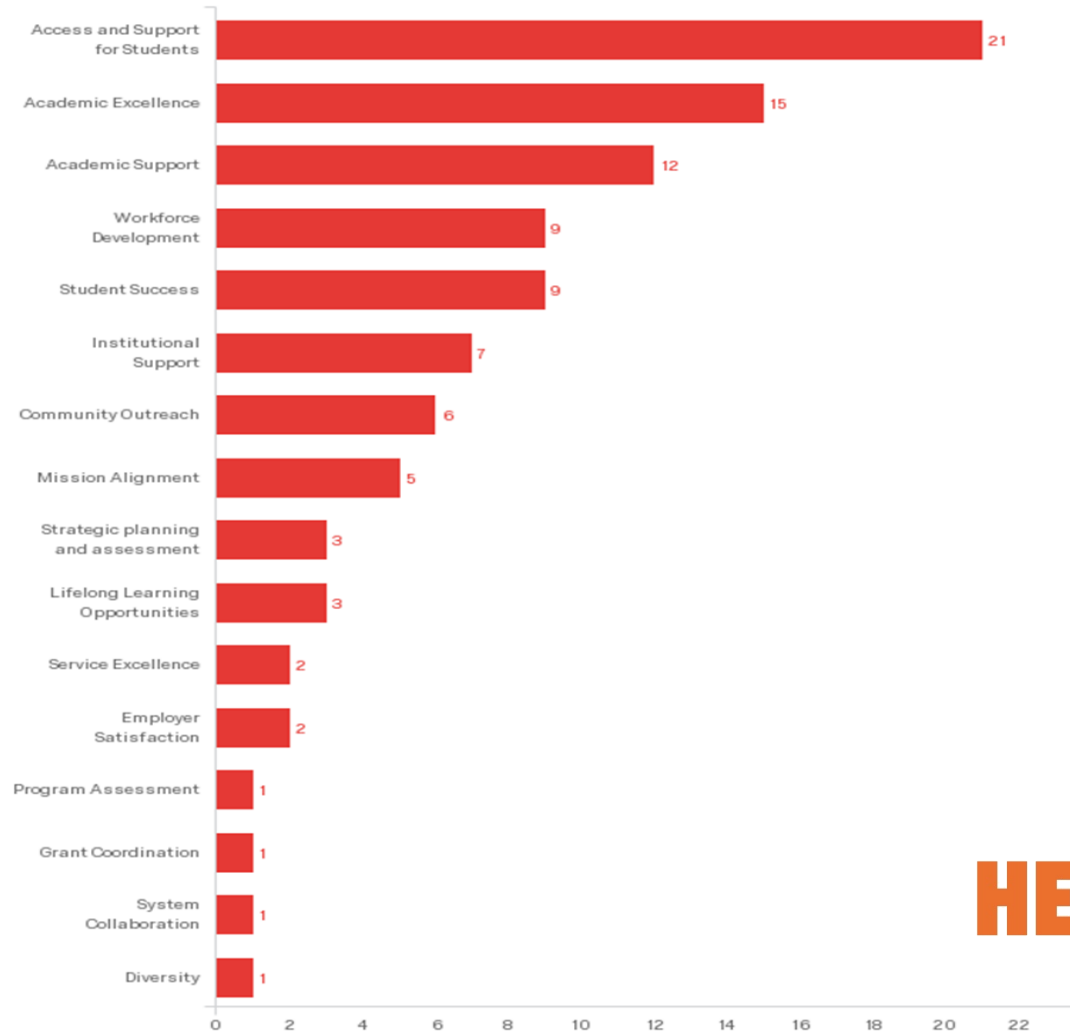
Awareness by Employee Category

		How aware are you of the college's overall success or progress in fulfilling its mission and achi... - Please rate your awareness					Total
		Extremely aware	Very aware	Moderately aware	Somewhat aware	Not aware at all	
Please indicate your employee category at Helena College	Contract Professional	3 15.79%	7 36.84%	6 31.58%	3 15.79%	0 0.00%	19 100.00%
	Classified Staff	1 4.76%	6 28.57%	9 42.86%	5 23.81%	0 0.00%	21 100.00%
	Faculty	1 5.56%	5 27.78%	10 55.56%	2 11.11%	0 0.00%	18 100.00%
	Total	5 8.62%	18 31.03%	25 43.10%	10 17.24%	0 0.00%	58 100.00%

Question Four: Please describe briefly how your position and your area/department/program supports Helena College's mission and core themes

- Question type: Responses were standardized and categorized using "Topics" tags
- Responses: 52

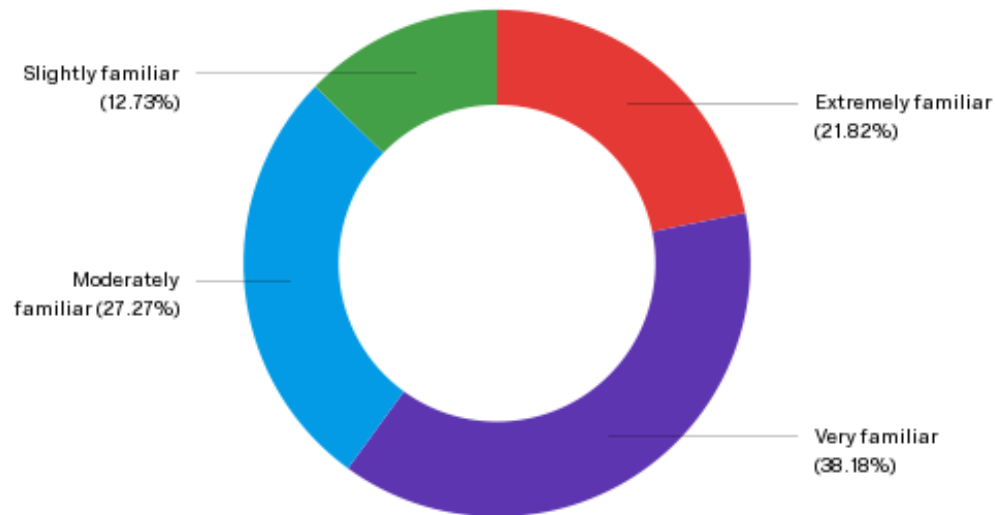
Q4: How positions/programs support Helena College's mission and core themes



Question Five: Are you familiar with your area's plan for identifying outcomes, requesting resources, and measuring achievement of outcomes?

- Question type: Matrix Table (Likert Scale 1-5)
- Responses: 55

Q5: Familiarity with area/department/program planning and assessment



Question Five: Are you familiar with your area's plan for identifying outcomes, requesting resources, and measuring achievement of outcomes?

- Question type: Matrix Table (Likert Scale 1-5)
- Responses: 55

Familiarity by Employee Category

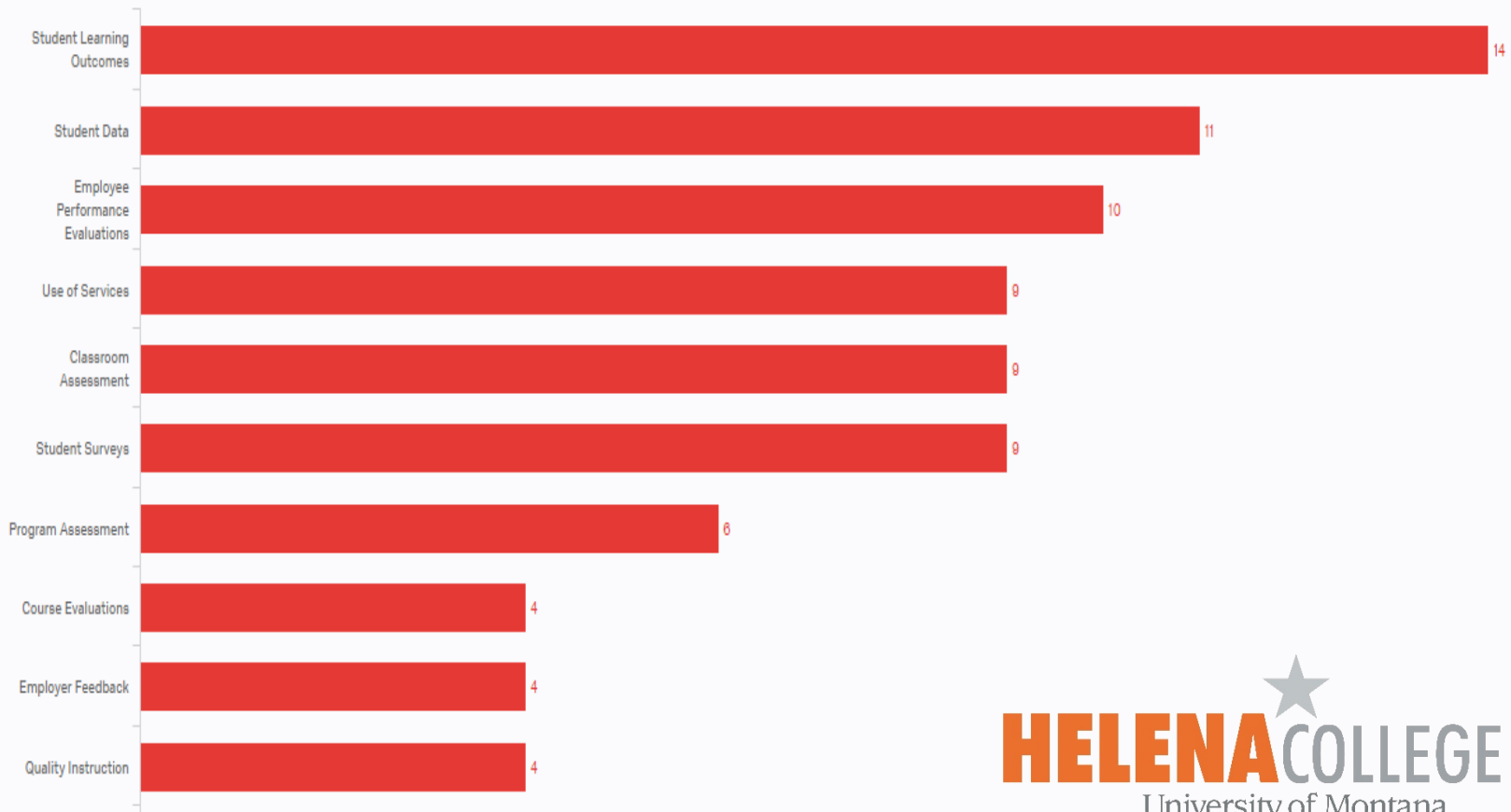
		Are you familiar with your area's plan for identifying outcomes, requesting resources, and measur... - Please rate your familiarity					Total
		Extremely familiar	Very familiar	Moderately familiar	Slightly familiar	Not familiar at all	
Please indicate your employee category at Helena College	Contract Professional	6 31.58%	8 42.11%	2 10.53%	3 15.79%	0 0.00%	19 100.00%
	Classified Staff	3 17.65%	5 29.41%	6 35.29%	3 17.65%	0 0.00%	17 100.00%
	Faculty	2 11.76%	7 41.18%	7 41.18%	1 5.88%	0 0.00%	17 100.00%
	Total	11 20.75%	20 37.74%	15 28.30%	7 13.21%	0 0.00%	53 100.00%

Question Six: How do you know your activities or those of your area/department/program are successful in supporting the college's mission and core themes? (examples- surveys, performance evaluations, student learning outcomes, student success metrics)

- Question type: Text entry. Responses were standardized and categorized using “Topics” tags
- Responses: 50

Top Ten Responses by Category

Q6 Evaluation of program success in supporting college mission and core themes

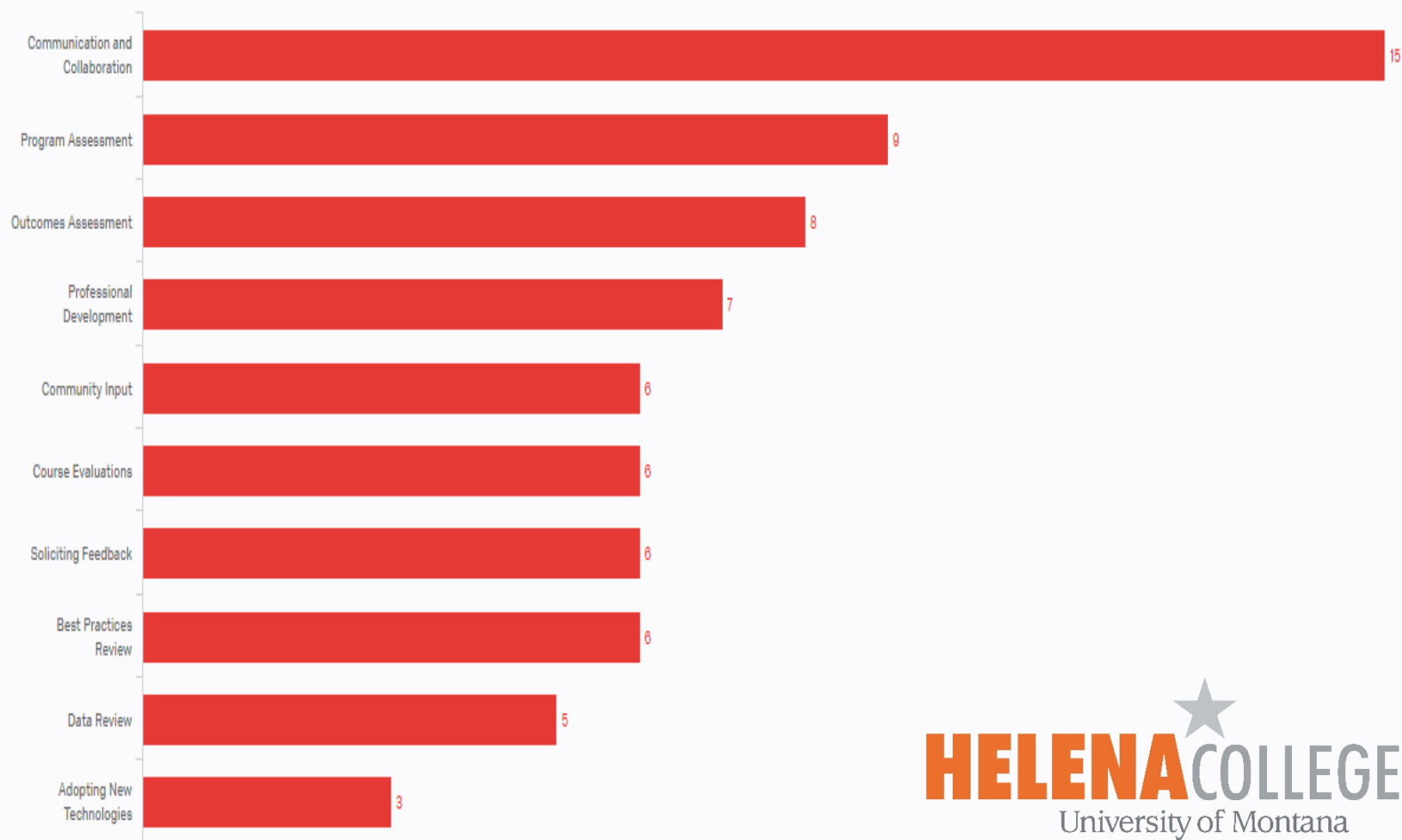


Question Seven: How does your area continuously improve instruction or the delivery of its services?

- Question type: Text entry. Responses were standardized and categorized using “Topics” tags
- Responses: 47

Top Ten Responses by Category

Q7: How instruction or service delivery is continuously improved



Conclusions and Next Steps

- **Majority of employees completed survey**, with good representation of programs and various campus constituencies. (Fiscal & Plant, Faculty underrepresented)
- **83% of campus community reports being at least moderately aware of the college's progress in fulfilling its mission and strategic goals.** Higher levels of awareness among contract professionals (53%), lower among classified staff (33%) and faculty (33%).
- **Wide variety of responses to how programs support institutional mission.** Most prevalent are providing access & support, academic excellence, workforce development, student success.
- **60% report being very to extremely familiar with area's planning, resource requests, and assessment of outcomes.** Highest familiarity among faculty (94%), lowest among classified staff (84%).
- Top methods reported by which programs measure mission/core theme alignment and achievement of outcomes are **student learning outcomes, student data, performance evaluations, use of services, classroom assessments, student surveys**
- Top methods reported by which programs for continuously improving instruction and service delivery are **communication/collaboration, progress assessment, outcome assessment, professional development, community input/feedback.**
- **Results of survey will be presented at all campus meeting** during institutional development days on May 10th. **Sessions will be held with all academic program areas** to discuss institutional, programmatic and course level outcomes assessment. **Similar discussions with student affairs and institutional support areas will follow.** Information from survey will be used to inform these discussions. Finally, insights from survey will be incorporated into the Year Seven Self-Study document.

